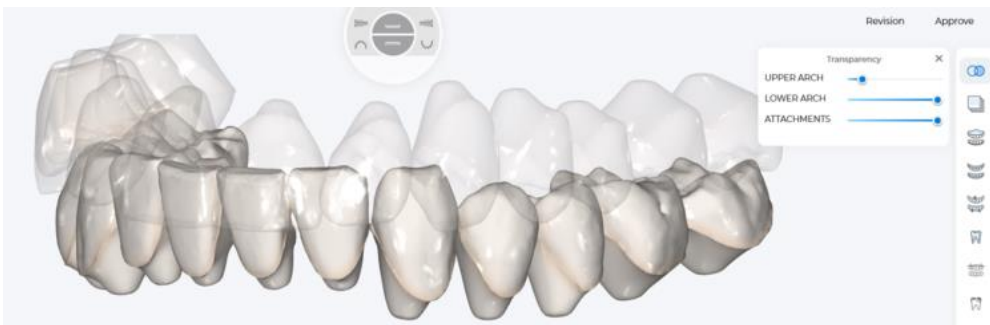




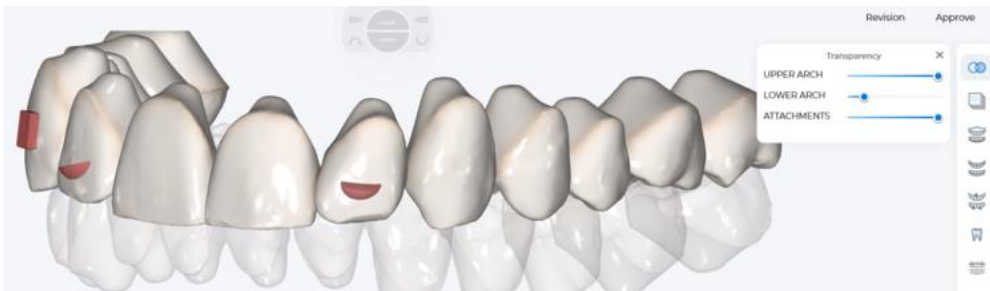
# Smile Design

## Interactive Options

### 1. ARCH SELECTION AND TRANSPARENCY TOOL



Slide **Upper Arch** bar to desired transparency state.



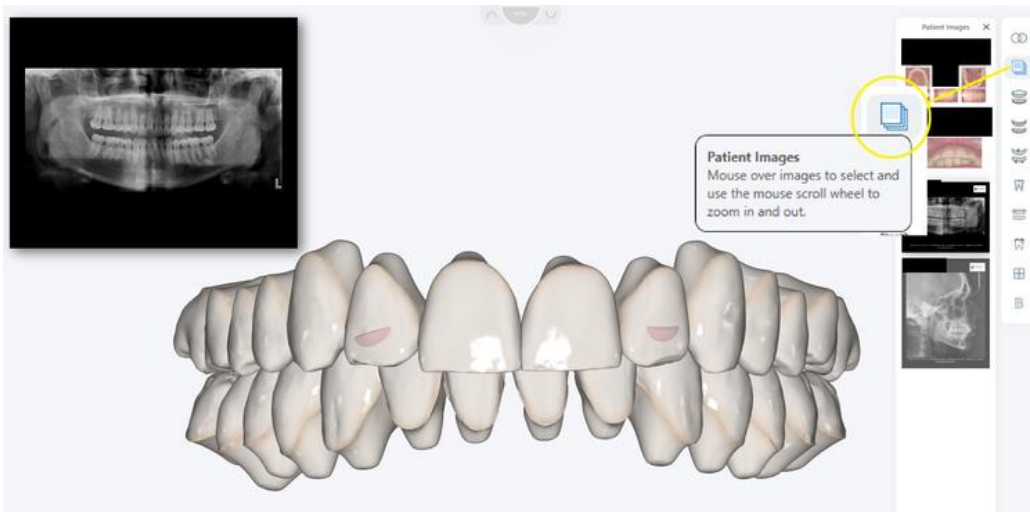
Slide **Lower Arch** bar to desired transparency state.



Slide **Attachment** bar to desired transparency state. Note: Slide all the way to the left for 100% transparency.

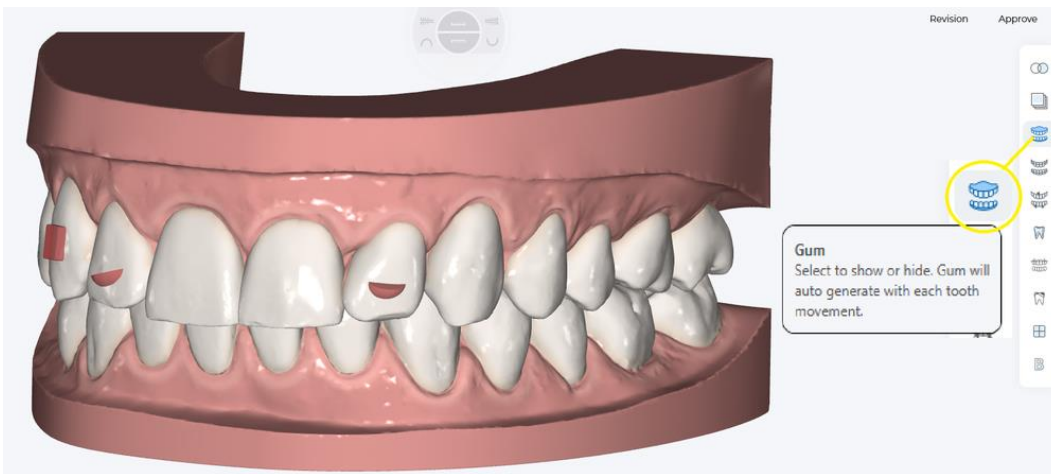
## 2. PATIENT IMAGES

Images loaded on the portal at time of order creation will automatically display in Smile Studio software.



## 3. MODEL WITH BASE SELECTION

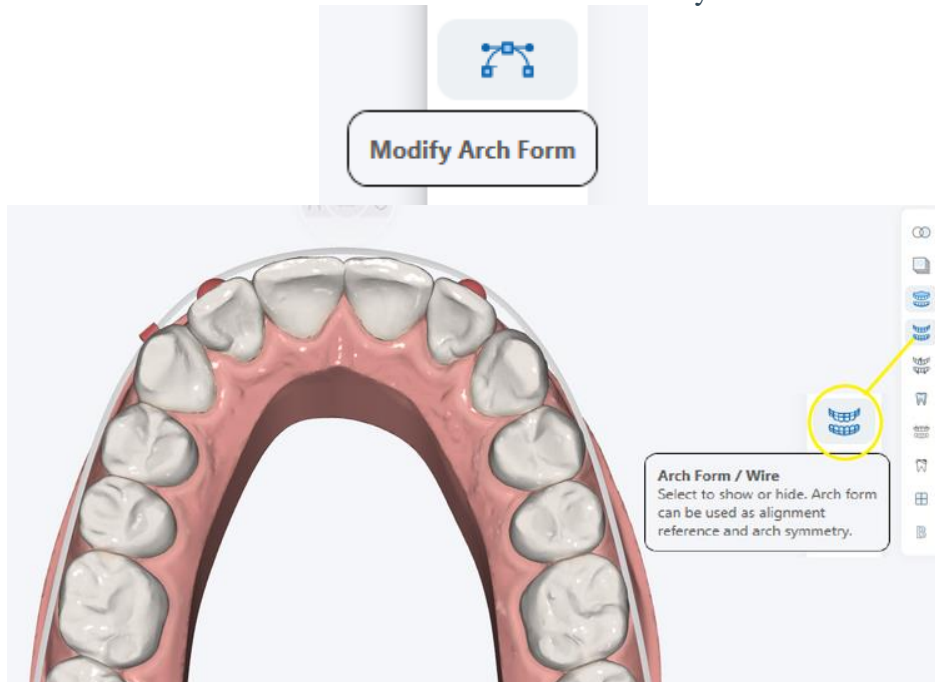
Select GUM tool to view model with base. **Note:** Base Morphing calculation will automatically take place the moment you select to show base.



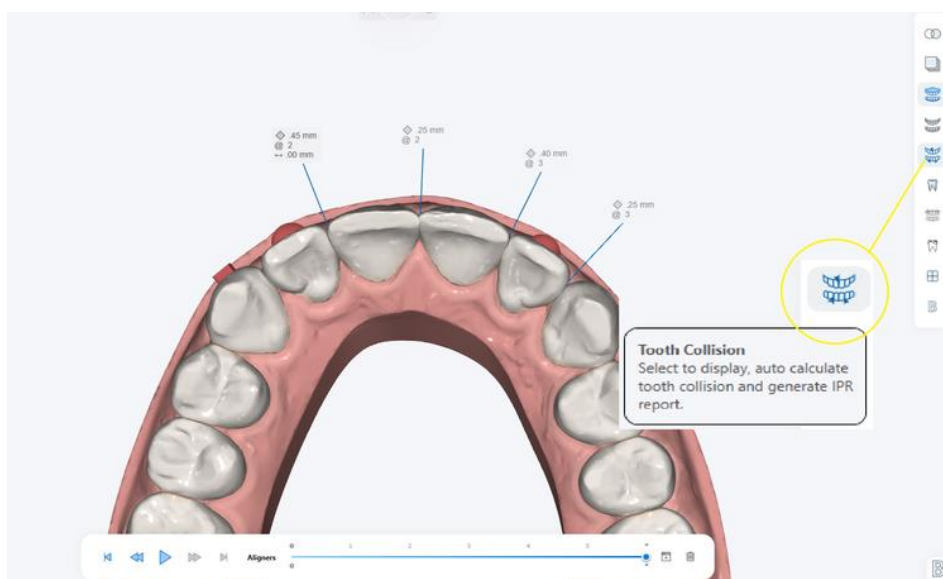
#### 4. VIEW / HIDE ARCH FORM / WIRE

Select **Arch form** tool to show arch form.

Note: Arch form can be modified with the arch modify tool.



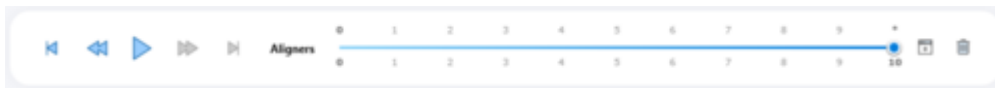
#### 5. VIEW / HIDE TOOTH COLLISION / IPR REPORT



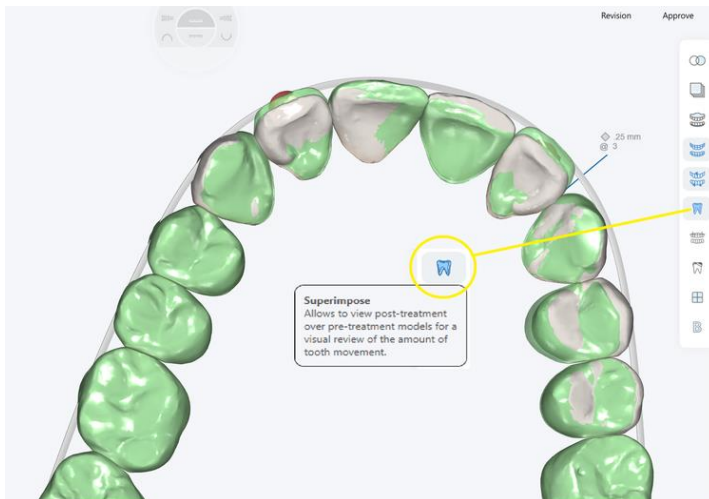
Select **tooth collision** tool to view or hide IPR report. Note: By default, tool collision tool is active. Make sure to keep active when reviewing IPR report and when show Wire box to show or hide wire

## 6. HOW TO SUPERIMPOSE PRE-TREATMENT MODEL

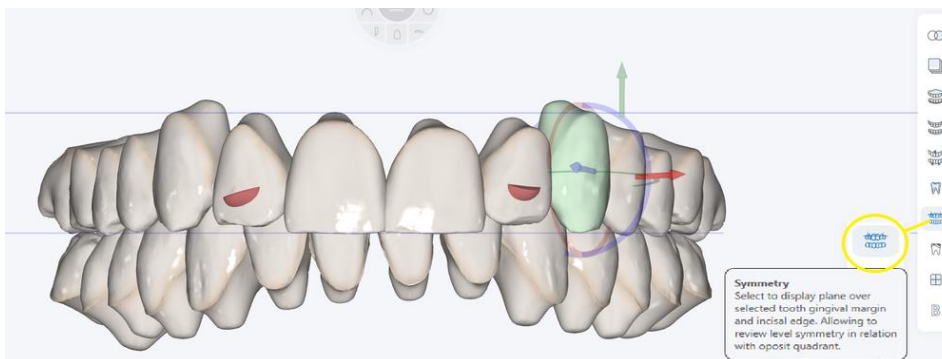
Select Superimpose tool to view or hide pre-treatment model over post-treatment model.



**Note:** CLICK Play button or Drag the pre to post slider bar to show the movement between the two models



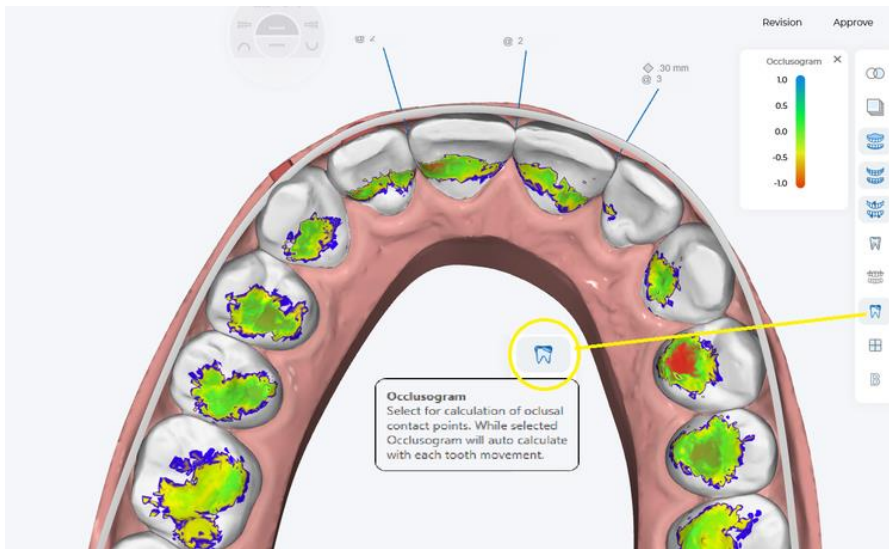
## 7. ACTIVATE TOOTH SYMMETRY MODE



Note: Planes will travel as you move the teeth directly with tooth manipulation tool or controlled tooth movement tools.

Select Tooth Symmetry tool to activate Tooth Symmetry Mode. Then, right click on a tooth and two planes will display at both the gingival margin and occlusal edge of selected tooth. Which allows you to view if the select tooth is levelled to the opposite quadrant tooth.

## 8. CALCULATE OCCLUSOGRAM



**Select** Occlusogram tool to initiate the calculation of Occlusion contact points. **Note:** Depth chart is measured in mm.